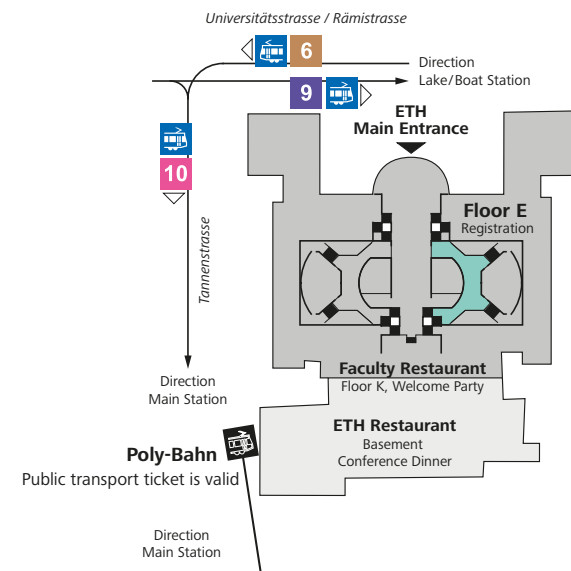
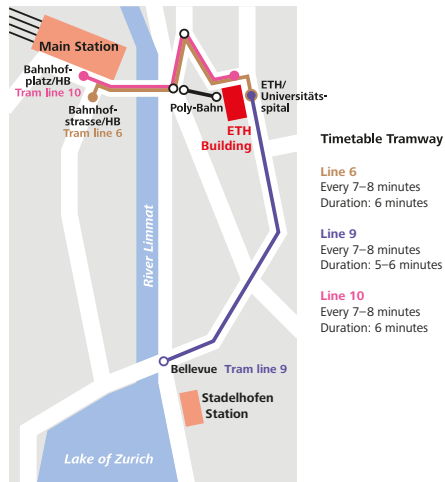


Conference Location

The conference is held at the
Swiss Federal Institute of Technology Zurich (ETHZ)
Main Building
Rämistrasse 101, CH-8092 Zürich
Phone: +41 44 632 11 11
www.ethz.ch

situated above Zürich's old town. It is accessible by tram
lines 6, 9 and 10 or by a 130-year old Swiss engineering
marvel, the Polybahn funicular railway (see maps below).



Registration and Conference Fee

Online registration is required under
www.nanoparticles.ch where abstract and exhibitor
application forms are available. No participation fee will
be charged. This is possible only thanks to the generous
financial support of our sponsors.

For questions related to the online
registration please contact
Anita Anselmi
Phone: +41 44 268 20 71
anita.anselmi@lunge-zuerich.ch



Travel information and Accommodations

Online hotel reservation is possible via the
conference homepage www.nanoparticles.ch.

Or contact
Zurich Tourism
Post Box
CH-8023 Zürich
Phone: +41 44 215 40 00
www.zuerich.com
hotel@zuerich.com

General information is also available on CH Tourism,
www.myswitzerland.com

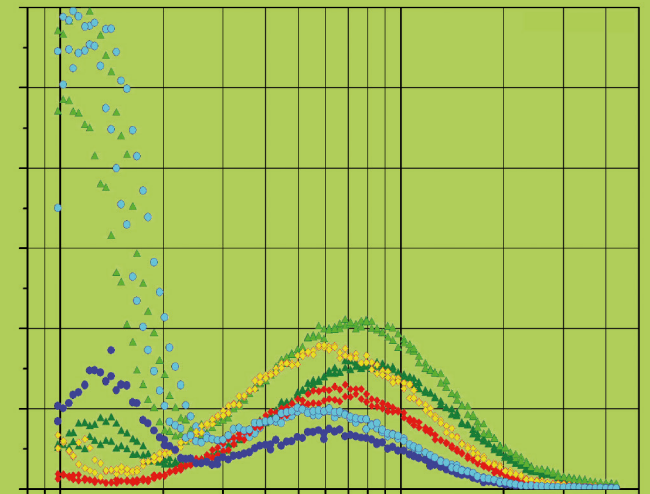
Further Information

Dr. Andreas Mayer, TTM
ttm.a.mayer@bluewin.ch
Phone: +41 56 496 64 14

Invitation and call for papers to the

23rd ETH-Conference on Combustion Generated Nanoparticles

Focus Event: Not just Soot and Diesel alone – Detox of all Combustion Engines has to be the Goal



June 17th – 20th, 2019
ETH Zurich, Switzerland
www.nanoparticles.ch
[#ethnpc2019](https://twitter.com/ethnpc2019)

No conference fee, sponsors welcomed

Photo courtesy of J. Schmitt

Layout and print by Empa

The ETH Conference on Combustion-Generated Nanoparticles serves as an interdisciplinary platform for expert discussions on all aspects of nanoparticles, freshly emitted from various sources, aged in ambient air, technical mitigation aspects, impact of particles on health, environment and climate and particle legislation. The conference brings together representatives from research, industry and legislation.

Conference Topics

- Aircraft, marine and other non-road sources
- Ambient air particles
- Biomass combustion and biofuels
- Emission control of diesel and gasoline vehicles (PTI)
- Emission up-grade for in-use vehicles
- Enforcement and post-Euro-6 legislation
- Environmental impact and global warming
- Health effects
- Nanoparticle formation and transformation
- Particle filter and deNOx technologies
- Particle metrology and chemical characterization
- Secondary emissions

Opening Ceremony and Key Note

The conference will be opened by **Prof. Dr. Gian-Luca Bona**, CEO of Empa, the Swiss Federal Laboratories for Materials Science and Technologies. The key note lecture will be given by **Prof. em. Dr. Wolfgang Lienemann**, University of Bern, sharing environmental-ethical considerations on the conference topic with us.

Focus Event:

Not just Soot and Diesel alone – Detox of all Combustion Engines has to be the Goal

Combustion engine (CE) production is at all-time highs. With ~100 million new vehicles produced per year and an in-use fleet of >1 billion vehicles worldwide, CE exhausts are a major source of air pollution. On-going urbanization and ever increasing traffic add to air pollution problems in cities. Thus, due to their complex physics, chemistry and toxicity, engine generated aerosols remain as a major target for research, technological development and refined legislation.

Health Session

The session will provide new experimental and epidemiological results about health consequences of air pollution. Special emphasis will be on the effects of ultrafine particles and on organs outside of the respiratory tract.

Papers and Posters

- We invite you to submit abstracts for oral and poster presentations on line according to instructions given on the registration page www.nanoparticles.ch.
- Abstracts must contain new information and results related to the above mentioned topics.
- Best poster presentations will be awarded, with prize money and certificates.
- Presenters at the conference will be invited to submit full length papers for publication after peer-review, in the journal "Emission Control Science and Technology"
- All contributions (including pdf copies of talks, posters and abstracts) will be published on the conference page. Submission of an abstract includes the agreement of the authors for publication on the conference homepage.

Organizing Committee

Anita Anselmi, Lunge Zürich
Dr. Christophe Barro, ETH/LAV
Oliver F. Bischof, TSI
Prof. Dr. Konstantinos Boulouchos, ETH/LAV
Prof. Dr. Heinz Burtscher, FHNW
Prof. Dr. Jan Czerwinski, BFH/AFHB, Biel
Giovanni D'Urbano, FOEN, Bern
Dr. Danilo Engelmann, BFH/AFHB, Biel
Prof. (em) Dr. Peter Gehr, University of Bern
Dr. Martin Gysel, PSI
Dr. Norbert Heeb, Empa
Dr. Christoph Hüglin, Empa
Prof. Dr. Nino Künzli, Swiss TPH & University of Basel
Thomas W. Lutz, ETH/LAV
Dr. h.c. Andreas Mayer, TTM
Dr. Loretta Müller, University of Bern, DBMR
Prof. Barbara Rothen-Rutishauser, AMI, University of Fribourg
Dr. Claus-Detlef Schegk, VerAn
Dr. Martin Stöckli, Inspire AG
Yan Zimmerli, BFH/AFHB, Biel

Exhibition

The exhibition of particle measurement instrumentation (PMI) and emission control devices (ECDs) is an important part of the conference. For registration use the exhibitor application form.

For further information on PMI contact

Prof. Dr. H. Burtscher, Phone: +41 56 202 74 73,
heinz.burtscher@fhnw.ch

For information on ECDs contact **V. Hensel/CEO-VERT**,
Phone: +49 174 864 64 64, volker.hensel@aurigna.com

Deadlines

- **Abstract submission for oral and poster presentations: March 22, 2019**
- **Exhibition application: March 22, 2019**
- **Information on paper/poster acceptance by April 18, 2019**
- **Registration for participants: May 17, 2019**

Social Events

The conference welcome party will take place on Monday, June 17, at 7 pm in the Faculty Restaurant on top of the ETH main building.

On Tuesday, June 18, an exhibitor reception takes place.

All participants are cordially invited to join the free conference dinner on Wednesday evening, June 19, at the ETH restaurant (see maps on next page) which is paid for by our sponsors.

Zürich at the northern end of Lake Zürich allows spectacular views to the Swiss Alps. Do not miss the view from the top of the ETH building during the welcome party.

